



All This Time... Synel Newsletter

Synel is proud to launch two new terminals: **SYnergy** fingerprint terminal and **SY-Face** - the innovative facial recognition terminal, which add to Synel's wide variety of hardware solutions.

SYnergy - Linux-based Fingerprint Terminal

Biometric, Color Screen, Real-time, Multimedia Terminal

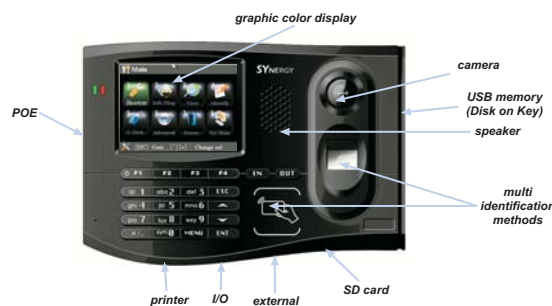
New on the Shelf

Synel is proud to announce the release of **SYnergy** - its new **Linux-based**, fingerprint, **graphic screen multimedia terminal**.

SYnergy terminal is Synel's latest Linux-based fingerprint biometric terminal, which combines a graphic color screen with technologically advanced features for all your time & attendance and access control applications.

SYnergy is compact in size and attractively designed, and is also equipped with a built in camera and a speaker for generating various sound effects such as alert notifications, report confirmation / rejection and other actions and events indications.

SYnergy can be linked to a variety of networks in your organization to complement the management information systems that are already in place.



SY-Face - Facial Recognition Terminal

The Most Sophisticated Recognition Solution - AT A GLANCE!

The latest addition to Synel's range of products is **SY-Face** - an embedded face recognition system with leading "Dual Sensor" Face Recognition Algorithm, which is applicable for time attendance and access control applications.

SY-Face is a time and attendance and access control terminal that uses face recognition technology to instantly identify users.

The **SY-Face** provides a touch-free, hygienic alternative to fingerprint and hand readers, while still eliminating "buddy punching" and the need for cards or badges. Users simply look at the device and within seconds they are identified and either clocked in for work or granted secure access.



CEO's column

Dear valued business partners and distributors,

As a technology leader in the field of management of employees activities in the organization, the recent months have been characterized by extensive efforts to produce and launch the new and advanced hardware products - SYnergy and SY-Face - which will assist you in promoting your businesses and establishing yourselves as high quality leading suppliers in your regions.

We are proud to launch SYnergy - our new Linux-based biometric multimedia terminal, and SY-Face - facial recognition terminal, the latest additions to complement our hardware line of products.

You will be notified shortly of a series of training sessions for the new products, with a list of dates to choose from, in order for you to get familiar with the terminals in the shortest time possible.

I am also pleased to note that our Harmony system continues to be one of the company's leading solutions, and is widely sold by our distributors and subsidiaries, both in Israel and around the world.

We value your cooperation and support throughout the year, and wish you a prosperous, healthy and happy year.

Gabi Buganim
President & CEO,
Synel Group



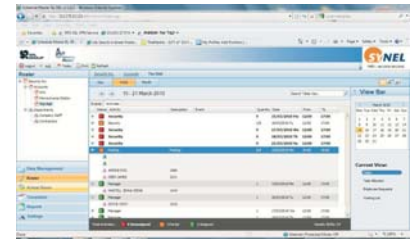
Technology News - Software

Schedule Master - Time to optimize your workforce

This new and powerful addition to the Synel software family enables dynamic scheduling and rostering in the most challenging and complicated environments.

A Web-based solution allowing the simple and effective scheduling of any number of employees, within any diverse working framework. Already successfully installed in retail, hospitality, stadium and security industries.

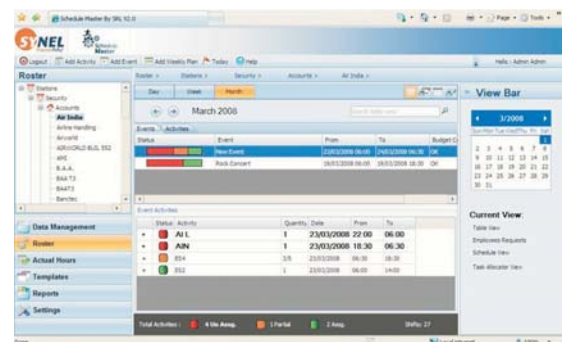
Customers include: The O2 Arena, Twickenham Stadium, Norwich City Football Club, A P Security, Carlisle Group and Westminster Plaza Hotel.



Schedule Master's sophisticated scheduling algorithm organises staff rosters, deploys employees in the most cost-effective manner and guarantees optimal time-effectiveness while avoiding errors in medium to large scale companies and organisations.

The system integrates fully with existing payroll, billing and HR systems and your existing T&A system. No other workforce solution currently available on the market can offer you the benefits of the combination between Harmony and Schedule Master.

- > Schedule master cuts needless expenditure and saves money on staff management
- > 99% proven hit rate for automatic staff rostering
- > Open interface for complementary systems and applications
- > Web-based solutions enabling central management and control
- > Online alerts on missed attendance and staffing problems
- > Online rostering updates for employees
- > Automatic and manual rostering





Technology News - communication solutions

POE technology gains momentum

Synel's POE communication gains momentum, around the world, and many organizations discover the numerous benefits of this simple and effective solution, that eliminates the need for laying out complex and costly infrastructure. Using POE technology enables:

- > No need for extra separate cable runs
- > Lower voltage (increased safety)
- > Greatly reduces installation costs and complexity
- > Because of absence of transformer no overheating of terminal occurs
- > A known worldwide standard
- > Reliability - Centralized power source (POE are SNMP manageable) enhance the protection against power overloads and spikes
- > Efficiency - POE terminals can be remotely monitored and controlled for efficient management and troubleshooting power failures

Technology News - Software

SY-NetServer - dot.NET advanced technology



Synel's leading SY-Server software is now operating under the advanced .NET technology – **SY-NetServer**.

The new technology turns the well known software into a quick and proficient tool, creating faster response, bi-directional communication in parallel, preventing memory leakage, and shortening the time needed for saving and deleting data from memory.

In addition, the user-interface has been re-designed and made more intuitive to better serve the user, activity buttons were added for frequently performed activities, and helpful features were added.

The main advantages of the of SY-NetServer::

- > Simultaneous programming of multiple terminals which saves time and minimizes system inactivity time –all system programming takes a few minutes only.
- > In this new technology SY-Server fully supports .NET type DLLs together with previously supported technologies such as C++ and COM.
- > Makes writing customized DLL much easier with a new and lighter interaction format.
- > Provides more detailed debugging tools and LOGs, which make system analysis much easier and faster.
- > The .NET type service mode is more stable and enables maintenance of the system while the service is running, and at the same time service is being backed-up by the internal watchdog engine.
- > The SY-NetServer combines internal support of many of the Syncomm options, which enables working with one application only.



Special Events

Marketing Seminar in China

During the third week of May, Taiji Computer Corporation Ltd. - Synel's distributor in China - conducted a 3 days seminar. Taiji is a publically traded company, and is one of China's leading IT companies, with thousands of employees spread throughout China.

During the seminar Taiji exhibited IT solutions as well as Synel's



complete system for

managing employees' activities in the organization "Harmony".

The demonstration of the Harmony system generated much interest, and was followed by personal meetings with the attending customers.

The seminar took place in the beautiful city Sanya in Hainan province, and hosted over 200 large organizations and government officials.



New Harmony Clients

Texaco - Chain of petrol stations in The Netherlands, Belgium and Luxemburg.

140 biometric fingerprint points, integrated with Synel's Harmony system, for access control, time & attendance, and various levels of HR management. WEB module.

Tanzanian Breweries - The project comprises a license for up to 5000 users, 10 clients, 100 web users, and also includes visitor module. Hardware installed include SY-400 controllers with TCP/IP, PRX-25 and PRX-100 readers, SY-785 fingerprint terminals with proximity readers with TCP/IP, PRX-KE, RFID proximity cards and RFID active long range cards.

The Bi-National Yacyreta Entity in Argentina/Paraguay - The Yacyreta Hydroelectric Power Station plant is one of the largest hydroelectric power stations in the world. The operation employs about 600 people, time and attendance data collection, with SY-745 terminals.

BZN - The project includes attendance registration and access control in the main gates and attendance, meals consumption reports, and access control to compartmentalized areas. The employees and visitors are identified by a smart card with an internal memory, which combines an advanced encoding technology for safeguarding the data which is stored in the card.





Technology News

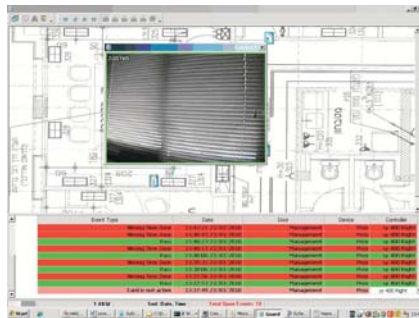
Integrated Video Recording and Viewing between Synel and Anteco

Synel's Harmony solution - is now available with integrated video viewing and recording capabilities, for all the extra security you have always wanted! And more....

Synel has recently completed the integration between its Harmony system and Anteco's Magic Radar's viewing and recording system. The integration forms an essential addition to Harmony's access control module, and is now an integral part of Harmony's ability to provide a complete security solution for your organization.

The video viewing and recording system enables:

- > Processing video images and sending an alarm in real-time in case of a break-in, sabotage or any suspicious movement or activity
- > Popup of an employee's picture from archive vs. a live picture during swiping of a card
- > Automatic recording and storage of an event and attachment for reconstruction purposes or any future use
- > High viewing resolution
- > Ability to operate with networks and internet viewing
- > Software tools for quick retrieval of video images recorded, including a range of capabilities for scanning the events sequence storage (date, hour, camera, etc.)
- > Assignment of a camera to a reader or event source and automatic switching of a camera in case of event
- > Choice of outlook areas



Synel's Harmony solution now integrates with Rokonet Alarm System

Synel's Harmony solution is now fully integrated with Rokonet's intrusion alarm system, which reduces costs, increases productivity, and making your businesses safer and more efficient.



The integration makes Harmony into a most sophisticated and complete access control system, able to cater for businesses of various sizes, and capable of expanding with new requirements as they arise.

Some of the main benefits of this integration are:

- > One screen is used for viewing alerts from the CCTV system and the intrusion alarm system
- > Enabling to set up common definitions from one single system, without the need to alternate between systems
- > Enabling easy viewing and tracking various alerts from different systems on one single screen



Schedule Master Projects

Park Plaza Westminster

The newly opened Park Plaza Westminster Bridge London Hotel is situated in London's South Bank, within walking distance of the city's most iconic attractions. The contemporary, design-led hotel in London features 54 suites and penthouses, and over 500 Studio Rooms.



Schedule Master and Harmony solution provide a holistic solution for access control and time & attendance. The system that installed in the hotel provides:

- > Scheduling of the Hotel staff, taking into account the hotel business needs according to actual occupation
- > Provide an online view of staff scheduling and rotations of hotel employees
- > Access control facilities

Shufersal

Shufersal is Israel's largest retail chain, operating 240 stores nationwide, covering a total area of 520,000 square meters, and employing approximately 10,600 employees



The Schedule Master system installed in Shufersal chain provides:

- > Integration with POS statistical information to better predict future workforce needs
- > Enable the store managers to automatically schedule the employees according to their predicted needs, taking into account availability, qualification, off days etc.
- > Reducing overtime and operational costs by using the automatic roster capabilities
- > Fully integrate with the store HR, payments and POS (Point of Sale) systems.

Tel Aviv Sourasky Medical Center

The Tel Aviv Sourasky Medical Center is one of the largest hospitals in the Israel. It has the major task of serving the 360,000 inhabitants of greater Tel Aviv area, in addition to more than one million people who enter the city every day. It is also the national referral center for various specialties.



Schedule Master provides an easy way to schedule the employees in the various departments, and provide a quick and easy way to include management and employees preferences in producing the schedule. Schedule Master has dramatically reduced the amount of time spent on planning the rostering of hundreds of hospital staff, enabling better and faster service .